

THE BOSLEY MEADOW

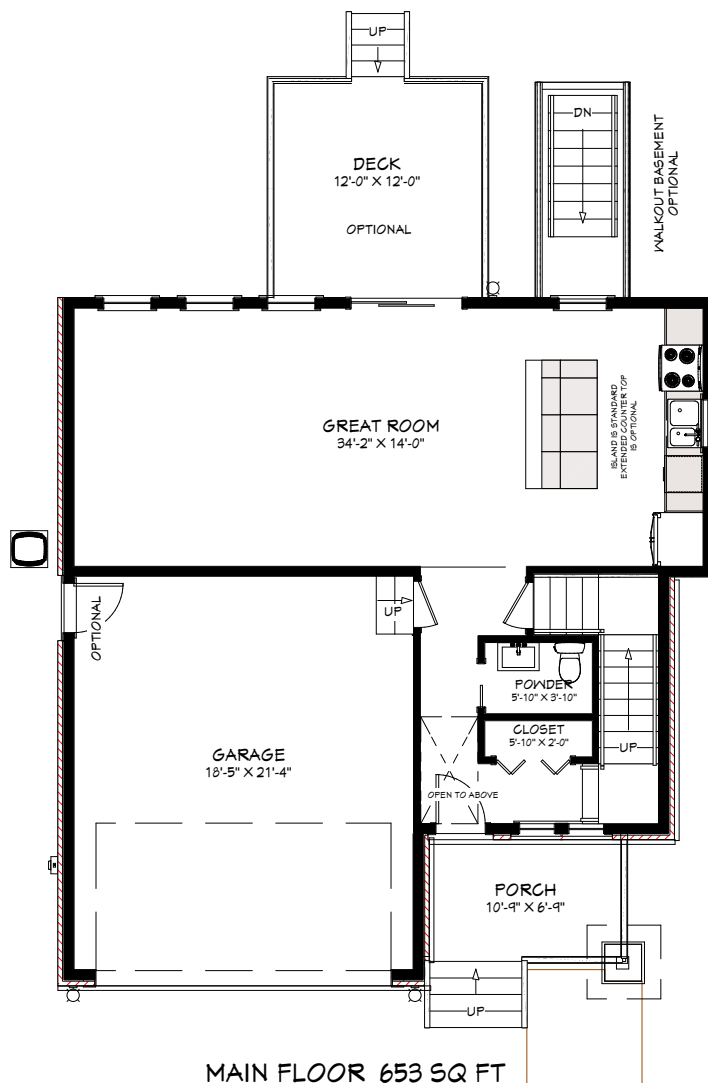
Two Story Detached

4 BED - 1,680 sq ft

2 CAR GARAGE

\$809,900

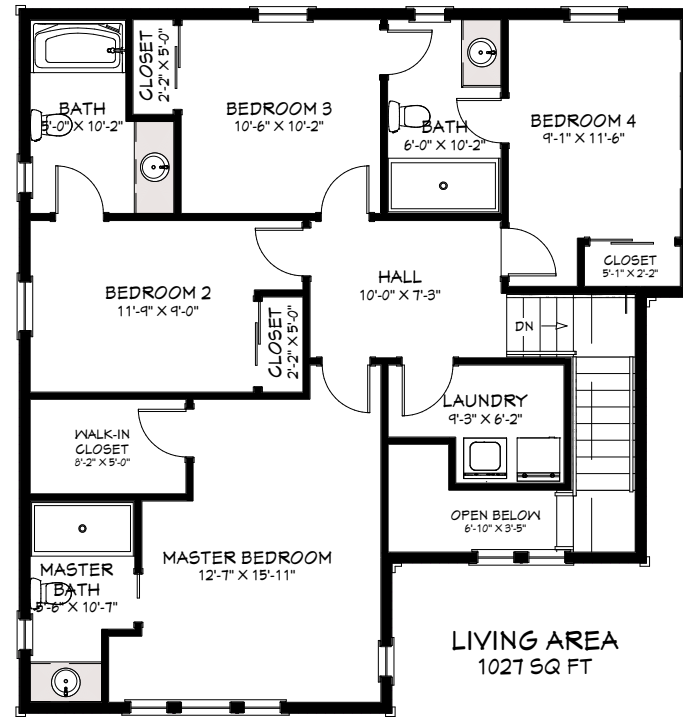




MAIN FLOOR 653 SQ FT
 2ND FLOOR 1028 SQ FT
 TOTAL: 1681 SQ FT

MAIN FLOOR PLAN

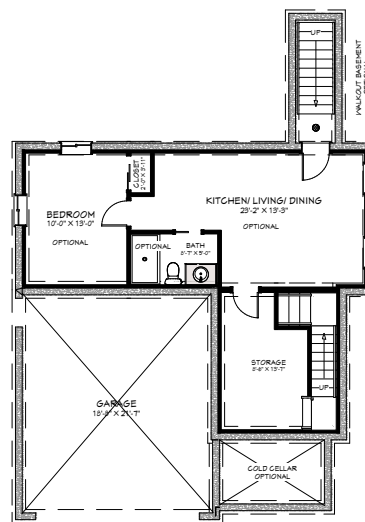
SCALE: 1/4" = 1'-0"



2ND FLOOR PLAN

4 BED MODEL

SCALE: 1/4" = 1'-0"



BASEMENT PLAN